

REPLACING THE BACKREST COVER

To ensure that Human Touch[®] products are repaired in a manner that is fully consistent with the practices used during the manufacturing process, Human Touch requires that all product repairs are performed using only factory-new parts and in accordance with these product repair instructions.

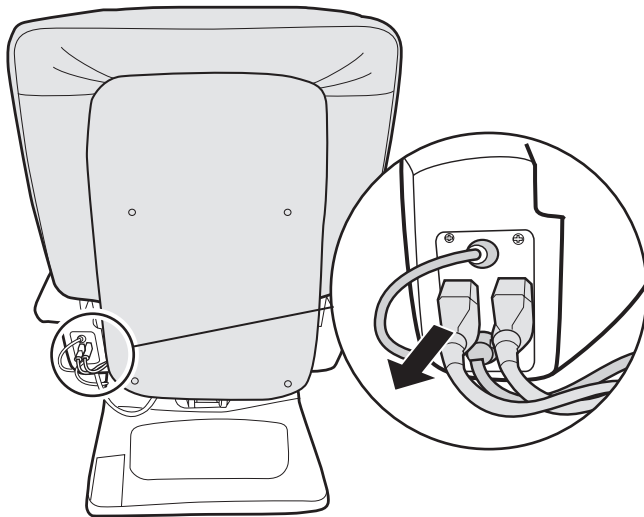
SERVICE LEVEL: 2

Tools Required: 5/32" (4mm) Allen key, Phillips-head screwdriver

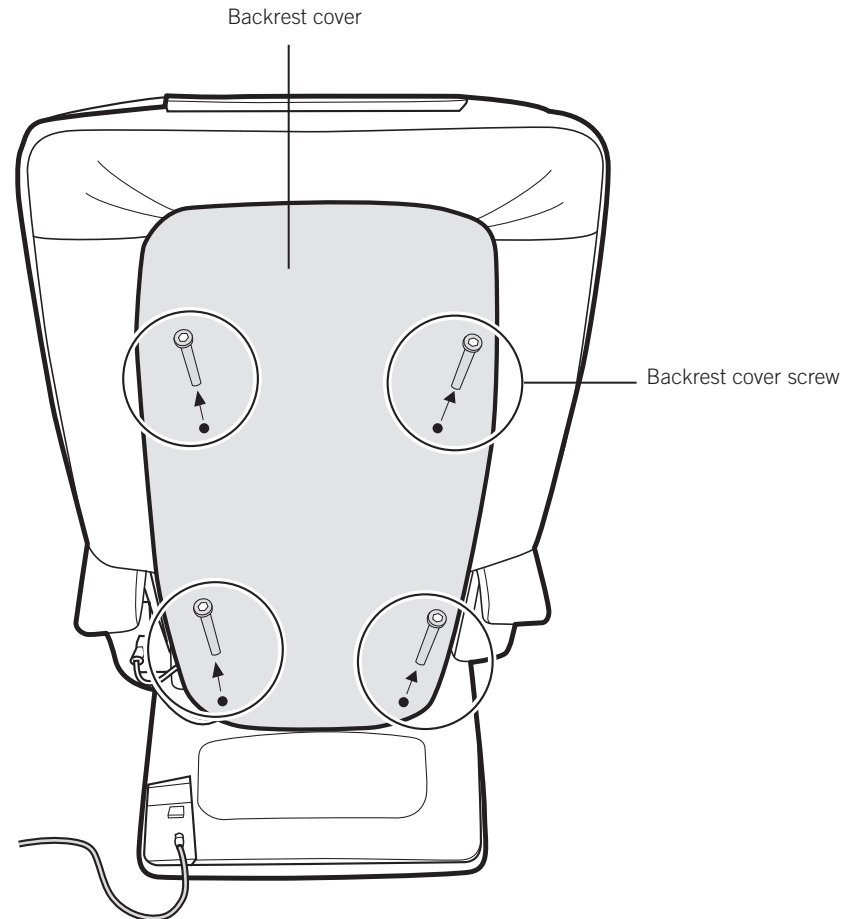
NOTE: SAVE ALL SCREWS FOR USE DURING REASSEMBLY.

REMOVING THE BACKREST COVER

1. Use the remote control to raise the backrest to a fully upright position.
2. Power off the chair and unplug it.
3. Disconnect all cables that connect the backrest to the left-hand side of the chair base (Fig.1).
4. Using a 5/32" (4mm) Allen key, remove the four backrest cover screws. Set the screws aside for use during reassembly (Fig.2).
5. Remove the backrest cover.



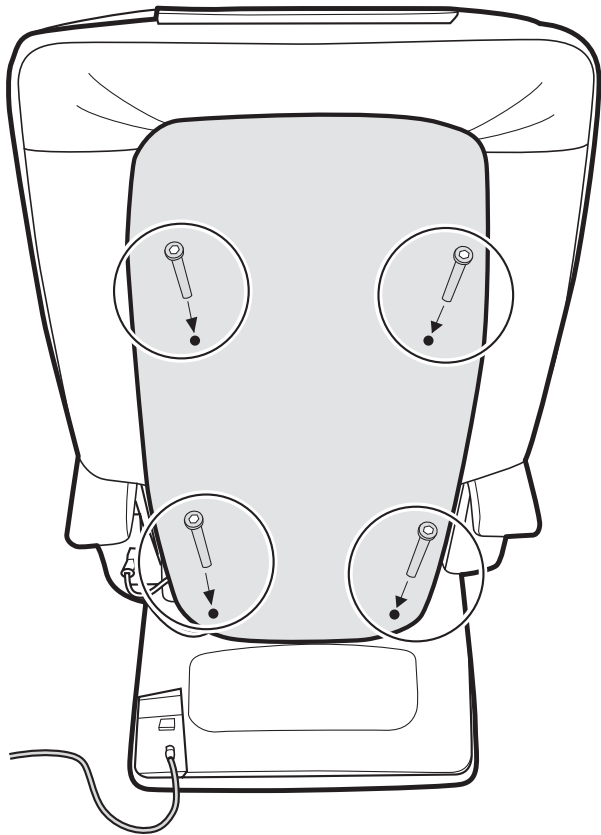
(Fig.1)



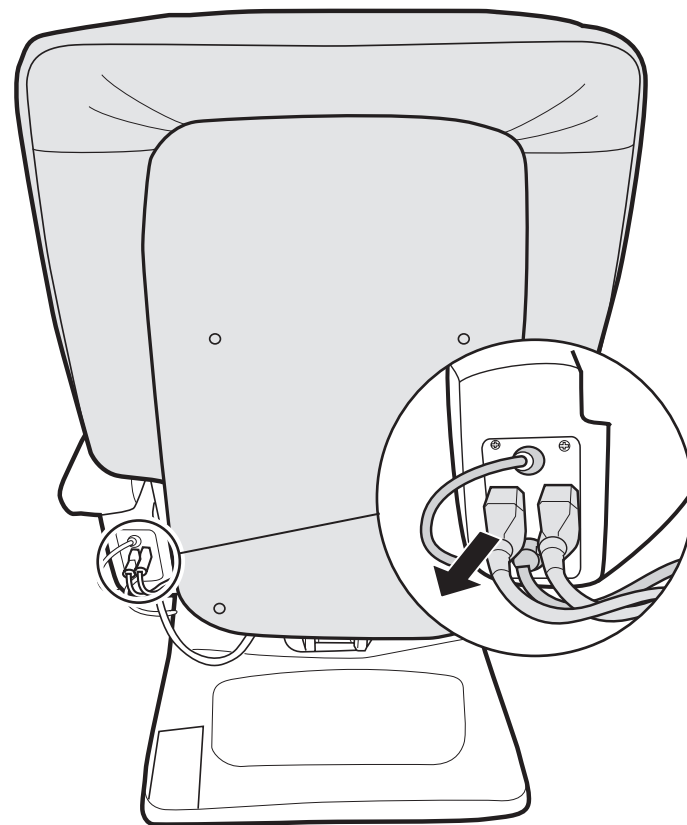
(Fig.2)

INSTALLING THE NEW BACKREST COVER

1. Place the backrest cover into position, aligning the four screw holes.
2. Using the 5/32" (4mm) Allen key, replace the four backrest screws (Fig.3). **NOTE:** Be sure to use the two longer screws in the upper screw holes and the two shorter screws in the lower screw holes.
3. Connect all cables that connect the backrest to the left-hand side of the chair base (Fig.4).



(Fig.3)



(Fig.4)