

REPLACING THE REAR SHROUD

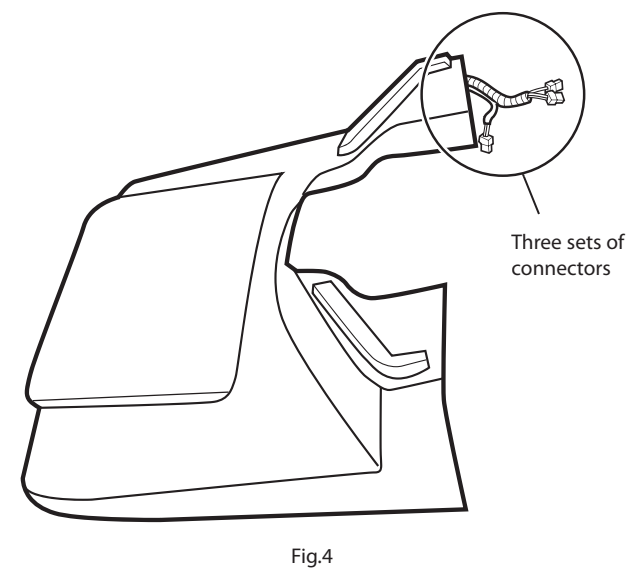
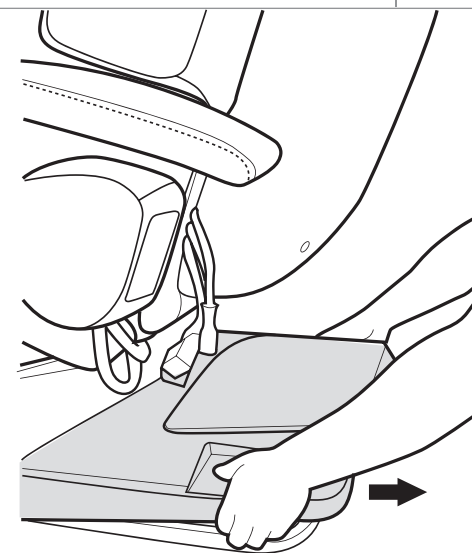
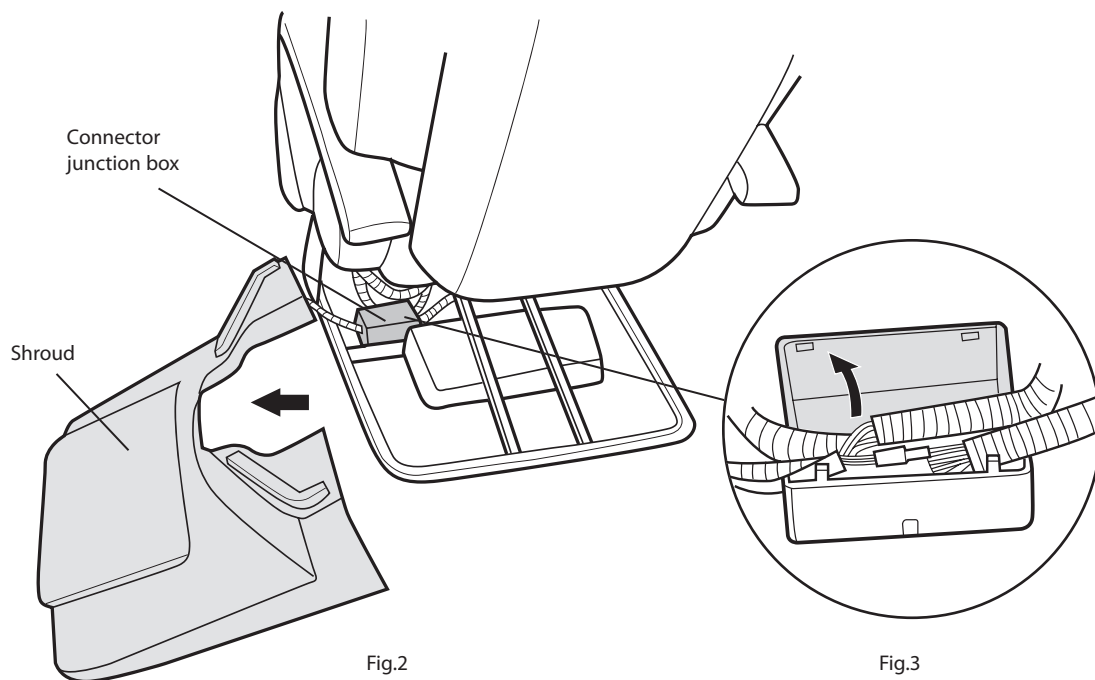
To ensure that Human Touch[®] products are repaired in a manner that is fully consistent with the practices used during the manufacturing process, Human Touch requires that all product repairs are performed using only factory-new parts and in accordance with these product repair instructions.

SERVICE LEVEL: 2

Tools Required: Nail clipper or other instrument suitable for cutting zip ties, one large zip tie

REMOVING THE REAR SHROUD

1. Standing behind the chair, grasp the shroud on both sides and pull upward just enough to detach it from the chair base (Fig.1).
2. Slide the shroud off to the left to expose the connector junction box (Fig.2).
3. Snap the junction box open, then disconnect the three sets of connectors that are attached to the rear shroud (Fig.3).
4. Remove the shroud completely from the chair base (Fig.4).



INSTALLING THE NEW REAR SHROUD

1. Position the rear shroud next to the chair, off to the left.
2. Connect the three connectors on the shroud to the corresponding connectors on the chair base (Fig.5).
3. Position the three sets of connectors inside the junction box, then, aligning the large holes on the cover with the large holes on the base, snap the junction box cover into place.
4. Secure the junction box cover using a large zip tie (Fig.6).
5. Place the shroud into position, insert the two tabs on the front of the shroud into the two corresponding slots on the chair base, then push down firmly to secure it.

