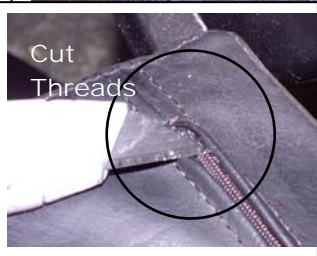


Initiator: MG	Replaces: NA	Revision date: 09042002
Title: Removal and Replacement of the HTT-9/9P HT-120/130 Footrest Gas Cylinder		
Purpose: Provide instructions for end user or store to remove and replace the Footrest Gas Recline Cylinder (Shock Absorber) for the HTT massage chair.		
Tools/Parts Required: Pliers - Utility Blade or Knife		
<p>Procedure:</p> <p><u>REMOVAL and REPLACEMENT</u></p> <p>Turn chair power off. Disconnect cord from wall outlet.</p> <ol style="list-style-type: none">1. Remove Seat Pad and Back Pad from chair.2. Allow footrest to travel to its fully upright position using the footrest handle.3. There are two styles of seat supports, identify yours as either the material with zipper (<u>Version 1</u>) or the suspension type (<u>Version 2</u>).<ol style="list-style-type: none">a. <u>Version 1 Removal</u><ol style="list-style-type: none">i. Cut the threads securing the zipper. Using a razor knife or small scissors locate and cut the thread positioned towards the rear end of the zipper. Unzip the zipper, exposing the footrest recline gas shock.ii. Locate the large silver nut on the end of the gas shock. Using a pair of pliers, loosen the nut approximately 1/2 turn, turning it counterclockwise.b. <u>Version 2 Removal</u><ol style="list-style-type: none">i. The gas shock is visible from the top of the chair seating area. You may need to remove one of the spring hooks securing the seat suspension material to the chair frame to gain easier access to the locking nut.ii. Locate the large silver nut on the end of the gas shock. Using a pair of pliers, loosen the nut approximately 1/2 turn, turning it counterclockwise.4. Locate the point where the gas cylinder connects to the footrest. There is a silver pivot pin securing the cylinder to the footrest. Using a small screwdriver blade or a pair of needle-nose pliers, carefully remove the locking clip on the pin. Slip the pin out of the cylinder and footrest bracket while supporting the weight of the footrest assembly.5. Using a pair of pliers, turn the end of the shock counter clockwise. This procedure will loosen the shock from the mounting bracket. The old shock can now be removed.6. Screw the silver lock nut onto the new shock to the end of the threads. Screw the new shock into place. As soon the threads make contact, turn the shock in an additional five complete turns.7. Turn the silver locking nut clockwise and secure with pliers.8. Reconnect the footrest to the shock using the pivot pin and locking clip.9. Test the footrest for proper operation.		

VERSION 1



Cut
Threads



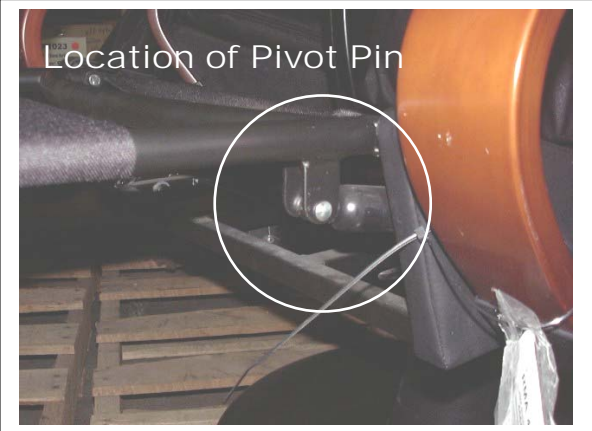
VERSION 2



Turn Silver Nut
counterclockwise to loosen



Location of Pivot Pin



Turn shock
counterclockwise to
remove

